

Name :

Date :

Grade : VII

Worksheet

Submission Date :

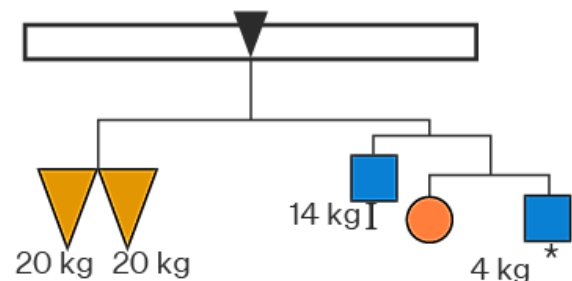
Subject : Math

Parent's sign :

Simple Equations

1. If 7 is added to three times of a number, then the result is 28. Find the number.

2. The given figure represents a weighing balance. The weights of some objects in the balance are given. Find the weight of each square and the circle.



3. Subramanian and Naidu donate some money in a Relief Fund. The amount paid by Naidu is Rs125 more than that of Subramanian. If the total money paid by them is Rs975, find the amount of money donated by Subramanian

4. Look at this riddle ! If she answers the riddle correctly however will she pay for the pencils ?

